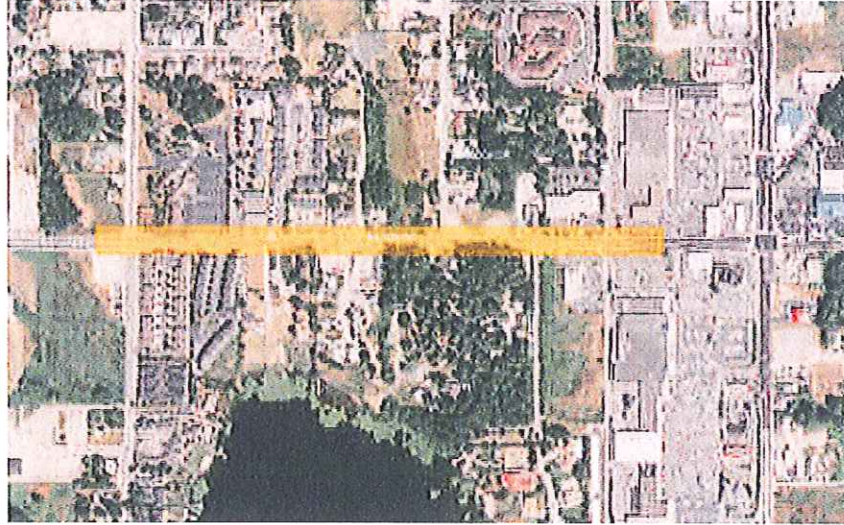


# CONSTRUCTION NOTICE

## *Milton Way Improvement Project 23<sup>rd</sup> Avenue to 28<sup>th</sup> Avenue*



Starting the week of February 22, 2010, J.R. Hayes & Sons, Inc, in cooperation with the City of Milton, will be constructing improvements to Milton Way between 23<sup>rd</sup> Avenue and 28<sup>th</sup> Avenue. Construction is anticipated to be complete by late fall.

The Milton Way Improvement Project will enhance the area's pedestrian facilities and traveling roadway while improving the accessibility to the businesses and residences along the corridor. The project includes installation of curbs, gutters, and sidewalks, center turn lane, illumination, landscaping, storm drainage improvements and new traffic signals at 23<sup>rd</sup> Avenue, 27<sup>th</sup> Avenue and 28<sup>th</sup> Avenue. For project

updates, please check the City of Milton's website at [www.cityofmilton.net](http://www.cityofmilton.net).

Impacts to private property and businesses will be kept to a minimum. As Milton Way is the City's major arterial, the Contractor is required to keep traffic flowing and to provide local access to the properties abutting the project. The firm Exeltech Consulting, Inc. will be providing Construction Management for this project.

If you have any questions or concerns, please call Rod Finkle at Exeltech at (360) 357-8289.

Thank you for your patience as we complete this long-awaited project.

Sincerely,

A handwritten signature in blue ink that reads "Letticia Neal".

Letticia Neal, P.E.  
Public Works Director / City Engineer

